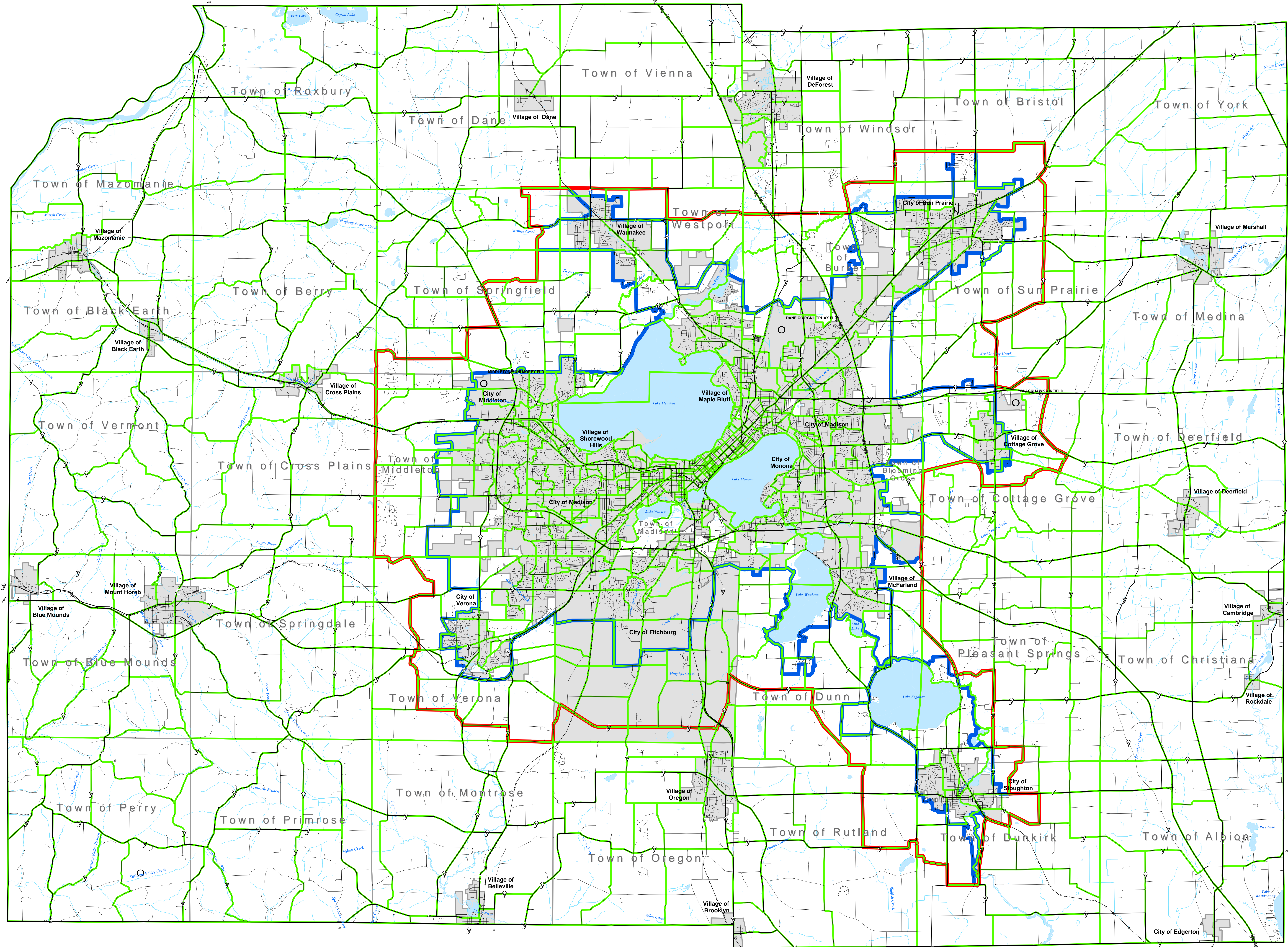
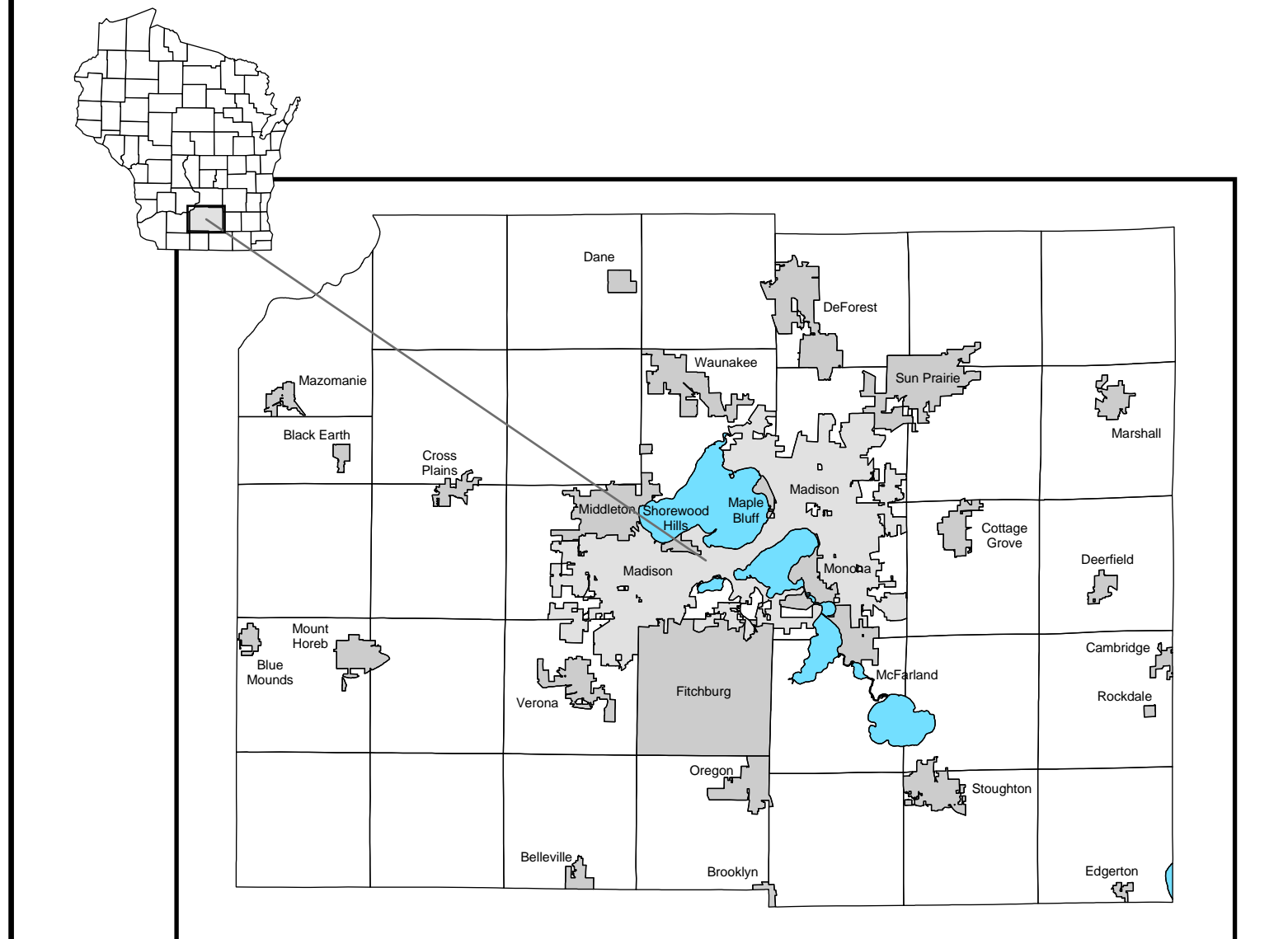


Madison Area Metropolitan Planning Organization Boundaries

Dane County, Wisconsin

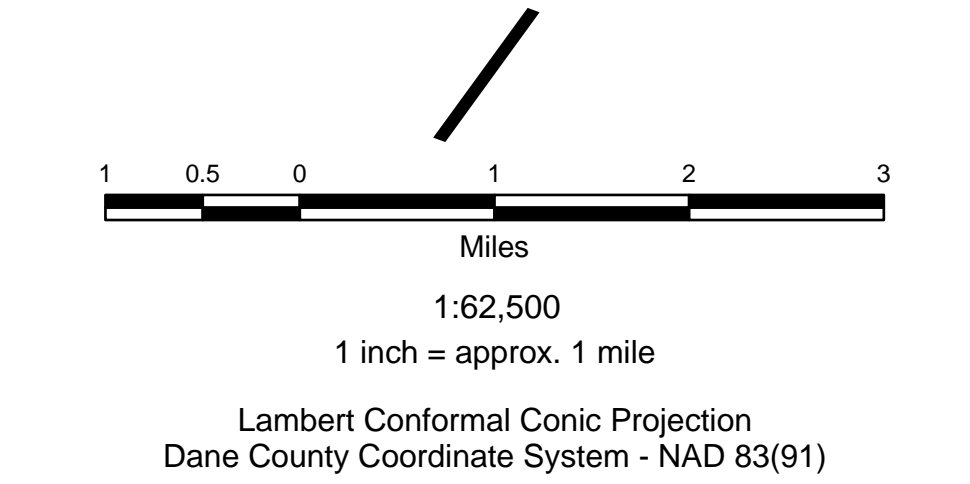


- Approved Metropolitan Planning Area Boundary (2000)
- Approved Urban Boundary (2000)
- TAZ
- City or Village
- Town
- Highway
- - - Rail
- Water Body
- Stream



Prepared by staff for the

 Metropolitan Planning Organization
 Rev: 10/2/02



Source Info:
 MPO Planning Area Boundary: 2000 (MAMPO)
 Approved Urban Boundary: 2000 (MAMPO)
 TAZs: 2000 (MAMPO, U.S. Census Bureau, 2001)
 Civil Division Limits: 2000, TIGER Line Files (U.S. Census Bureau, 2001)
 Roads: 2000, TIGER Line Files (U.S. Census Bureau, 2001)
 Airports: 2000, Digital Aeronautical Flight Information File Edition 6 (National Imagery and Mapping Agency)