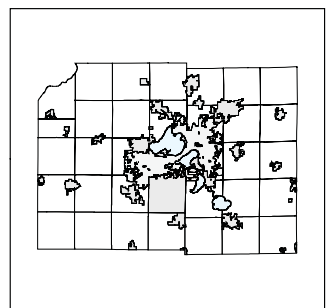
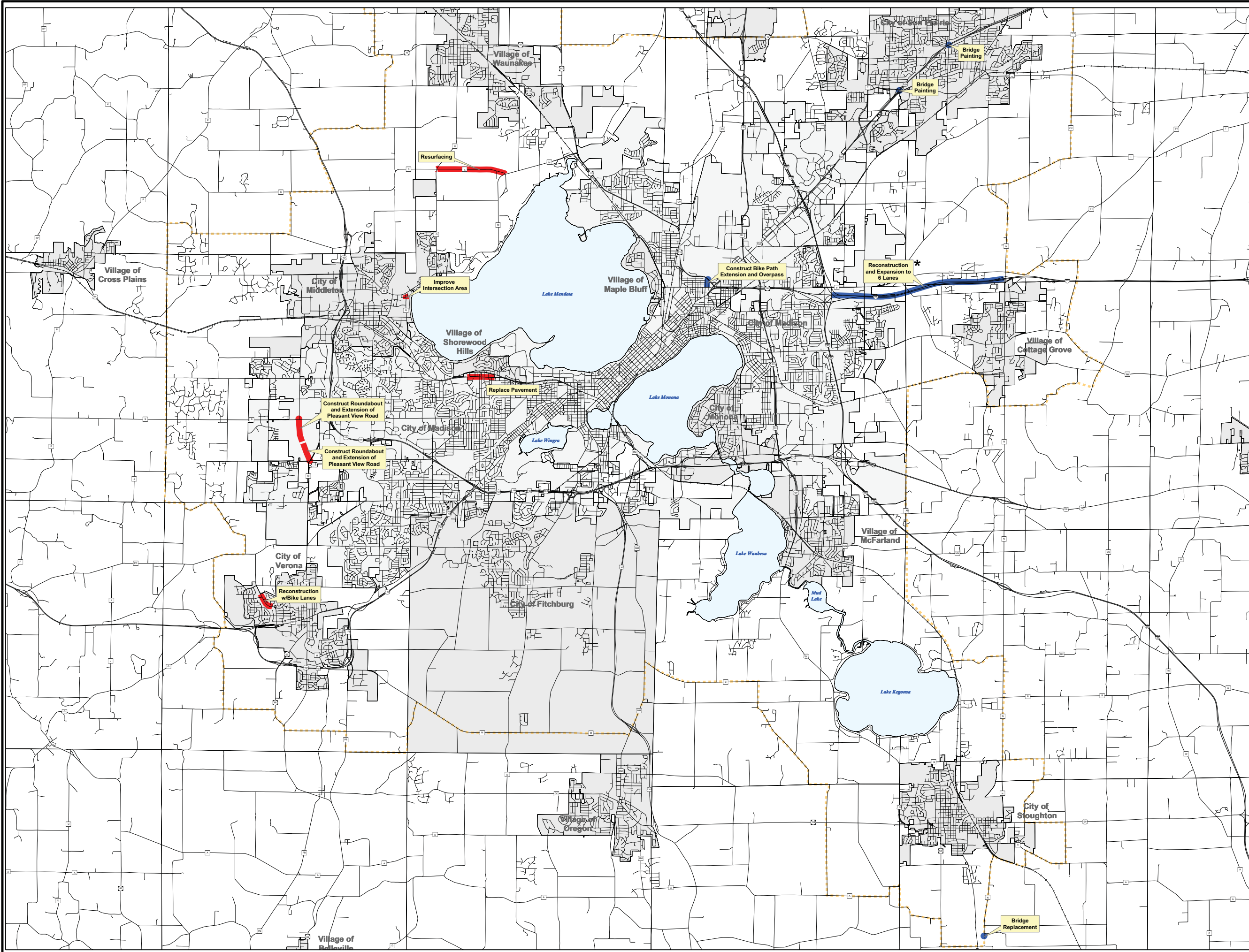


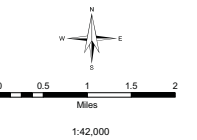
Roadway and Ped/Bike Projects Funded With Economic Recovery Funds

- 2009
- 2010
- - - MPO Planning Area Boundary
- *** Planned Capacity Expansion Project

Note: 2010 projects prioritized by the MPO for funding with allocation of STP-Urban funds to the Madison area, except for CTH K which is outside the urban area.



Prepared by staff to the:
T.P.B.
 Transportation Planning Board
 A Metropolitan Planning Organization (MPO)



Lambert Conformal Conic Projection
 Dane County Coordinate System - NAD 83(91)

Source Info:
 Street Base: 4/06, Orthophoto Derived (MAMPO/DCLIO),
 Hydrography: 1/00, 1/04-05 (VNDNR),
 Civil Division Limits: 1/06, Assessor Records (DCRPC).